

CITY OF PLAINS

Prepared by Sanders County Rural Addressing

Updated December 2017 in ArcGIS 10.5 using Arc Map. ESRI, Inc.

NAD 1983 State Plane Montana Fips 2500

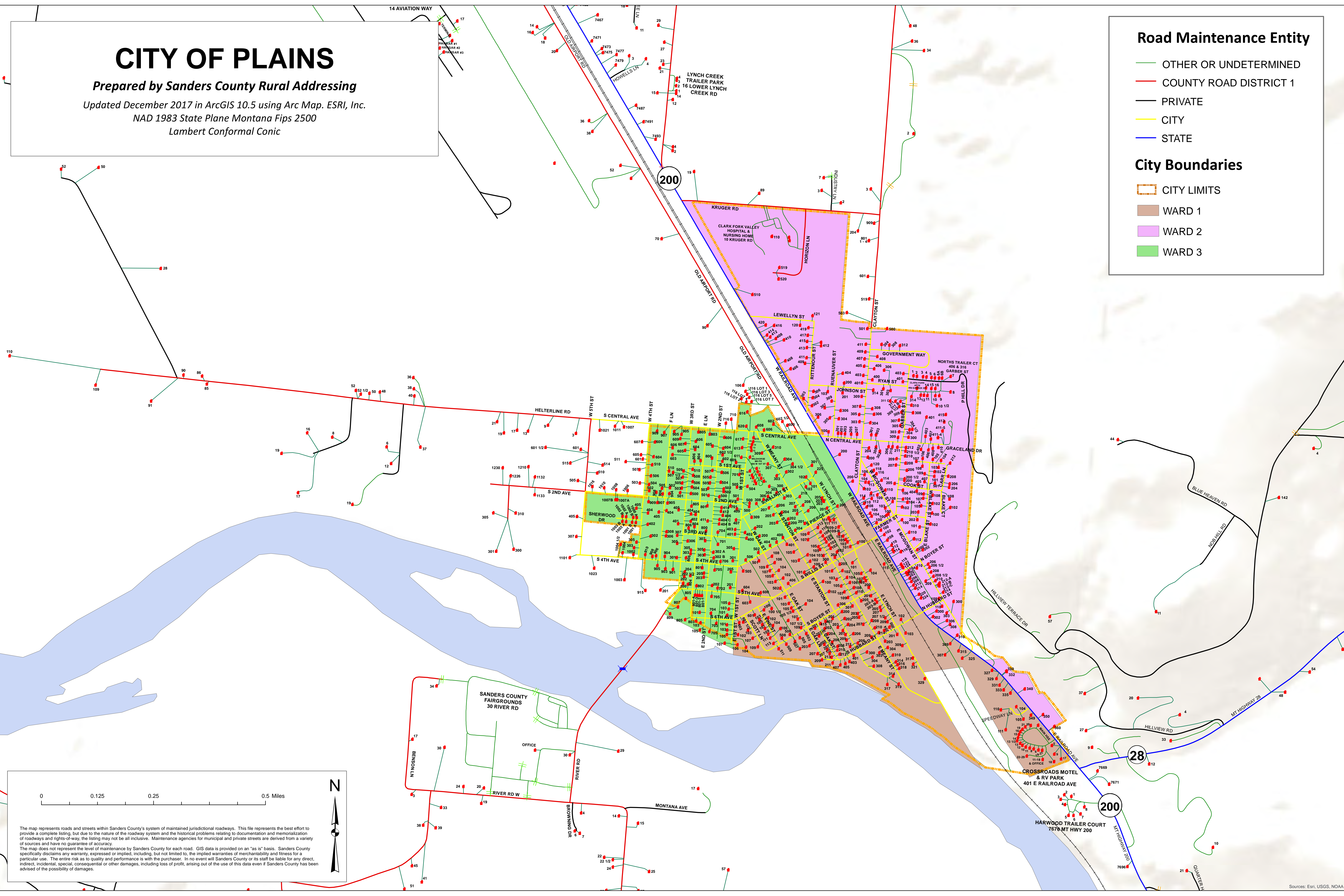
Lambert Conformal Conic

Road Maintenance Entity

- OTHER OR UNDETERMINED
- COUNTY ROAD DISTRICT 1
- PRIVATE
- CITY
- STATE

City Boundaries

- CITY LIMITS
- WARD 1
- WARD 2
- WARD 3



The map represents roads and streets within Sanders County's system of maintained jurisdictional roadways. This file represents the best effort to provide a complete listing, but due to the nature of the roadway system and the historical problems relating to documentation and memorialization of roadways and rights-of-way, the listing may not be all inclusive. Maintenance agencies for municipal and private streets are derived from a variety of sources and have no guarantee of accuracy. The map does not represent the level of maintenance by Sanders County for each road. GIS data is provided on an "as is" basis. Sanders County specifically disclaims any warranty, expressed or implied, including, but not limited to, the implied warranties of merchantability and fitness for a particular use. The entire risk as to quality and performance is with the purchaser. In no event will Sanders County or its staff be liable for any direct, indirect, incidental, special, consequential or other damages, including loss of profit, arising out of the use of this data even if Sanders County has been advised of the possibility of damages.