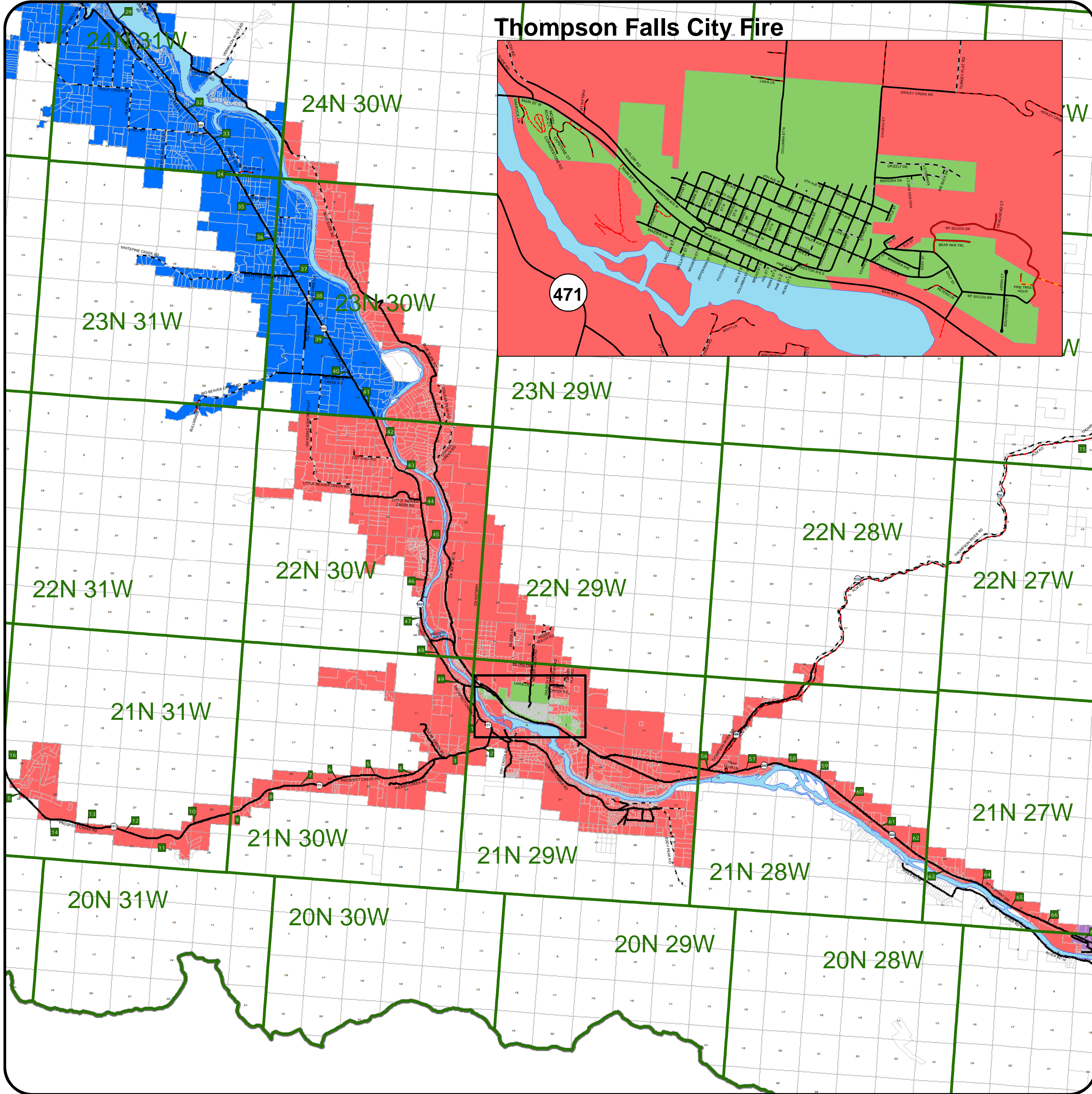
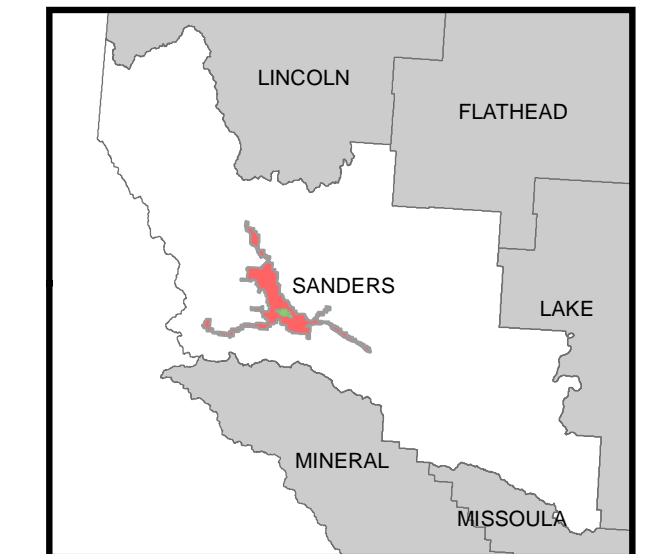
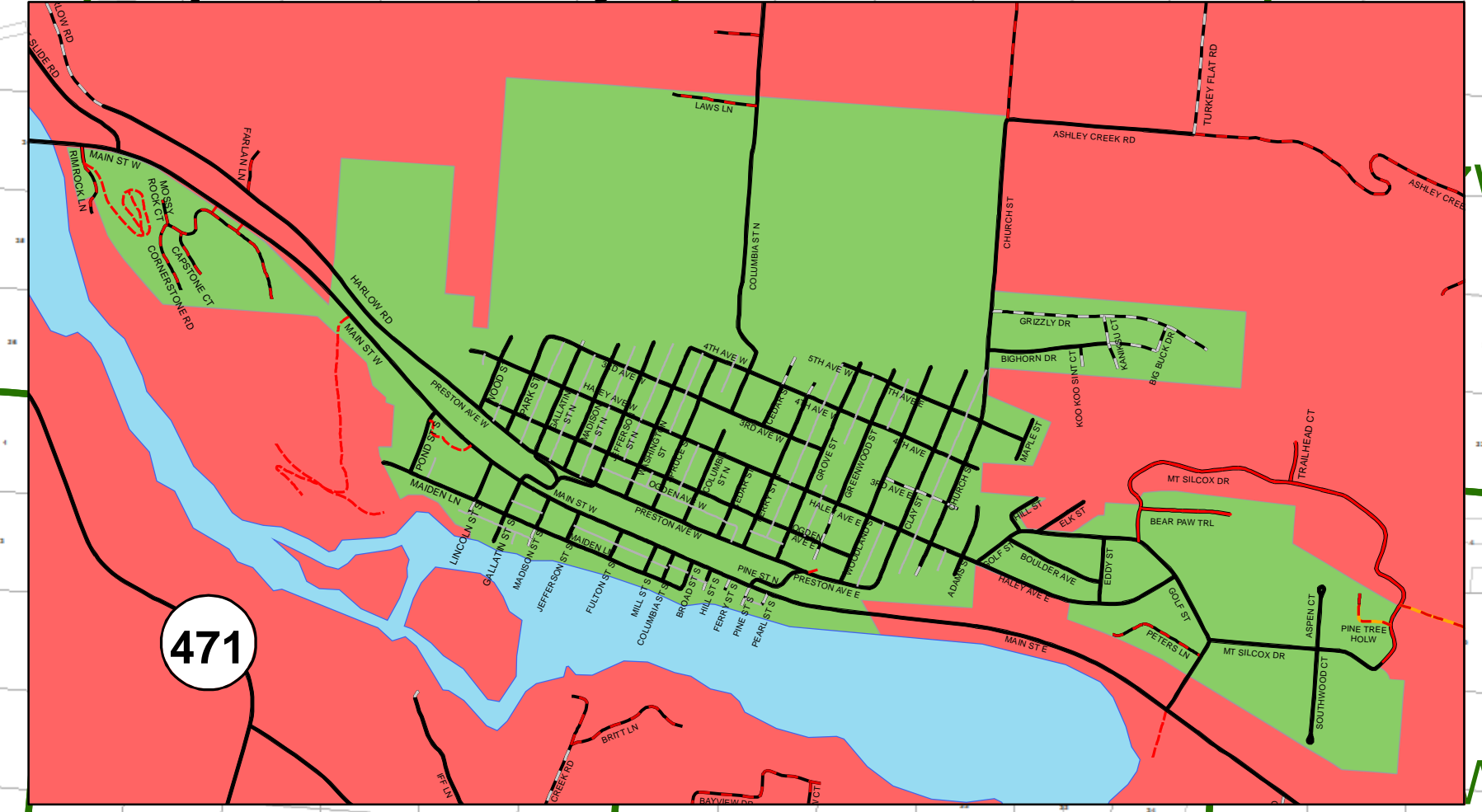


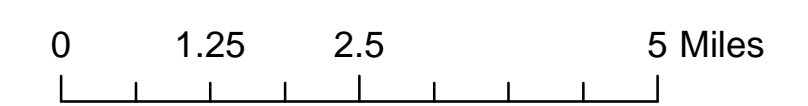
# Thompson Falls Fire Districts



**Thompson Falls City Fire**



- Plains-Paradise Rural Fire District
- Thompson Falls Rural Fire District
- T. Falls Volunteer Fire District
- Trout Creek Rural Fire District



*Prepared by Sanders County Rural Addressing  
 Created January 2018 in ArcGIS 10.5 using Arc Map, ESRI, Inc.  
 NAD 1983 State Plane Montana Fips 2500  
 Lambert Conformal Conic*

Sanders County has verified to its best abilities the accuracy of the displayed data with local officials. However, the boundaries of all districts are not surveyed or verified through GPS. Sanders County specifically disclaims any warranty, expressed or implied, including, but not limited to, the implied warranties of merchantability and fitness for a particular use. The entire risk as to quality and performance is with the purchaser. In no event will Sanders County or its staff be liable for any direct, indirect, incidental, special, consequential or other damages, including loss of profit, arising out of the use of this data even if Sanders County has been advised of the possibility of damages.