

PRELIMINARY PLAT

# COLE MINOR SUBDIVISION

LOCATED IN A PORTION OF GOV'T. LOT 1, GOV'T. LOT 2, THE S 1/2 OF THE NE 1/4  
AND A PORTION OF THE SE 1/4 OF SECTION 6, T. 21 N., R. 29 W.,  
P.M.M., SANDERS COUNTY, MONTANA



BROTHERTON  
BD 311794

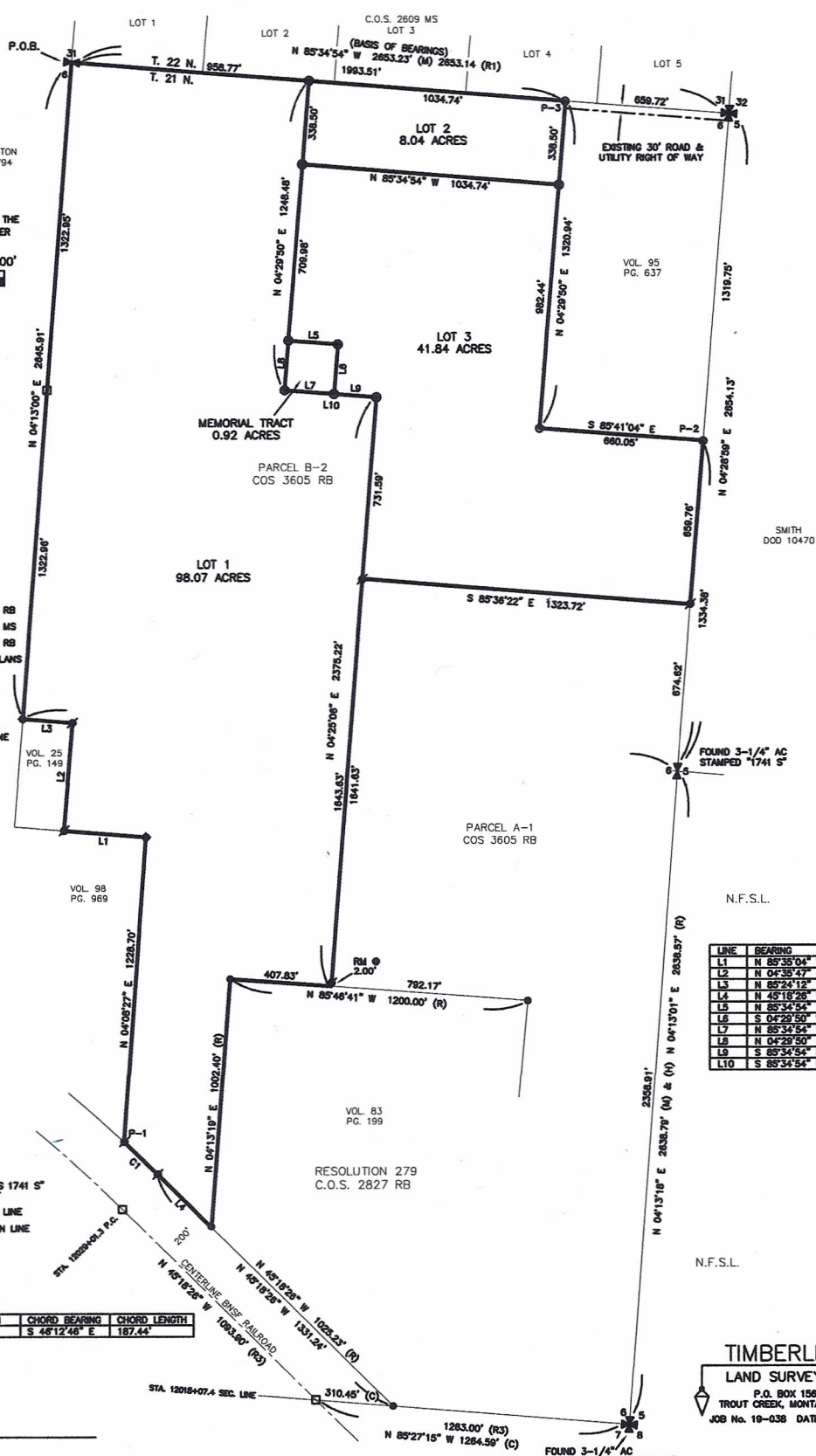
BEARINGS BASED ON GEODESIC NORTH BETWEEN THE  
SE SECTION CORNER AND THE EAST 1/4 CORNER



SCALE: 1" = 300'

**LEGEND**

- ✕ INDICATES FOUND MONUMENT AS NOTED
- INDICATES A FOUND 1/2" REBAR WITH A 1" ORANGE PLASTIC CAP STAMPED "HAGEDORN 1943 L5"
- INDICATES A FOUND 1/2" WITH A 1-1/2" AC STAMPED "J ALLEN 3491 S"
- ⚡ INDICATES A FOUND 5/8" REBAR WITH A 1-1/4" YELLOW PLASTIC CAP STAMPED "SMITH 18036 L5"
- ◆ INDICATES A FOUND 1/2" WITH A 1-1/2" AC STAMPED "MCARTHUR RLS 1741 S"
- INDICATES A SET 5/8" X 24" REBAR WITH A 1-1/4" YELLOW PLASTIC CAP STAMPED "SMITH 18036 L5"
- INDICATES A CALCULATED POSITION NOTHING FOUND OR SET
- RM INDICATES REFERENCE MONUMENT
- AC INDICATES ALUMINUM CAP
- (C) INDICATES CALCULATED
- (R) INDICATES RECORD DIMENSION PER C.O.S. 2827 RB
- (R1) INDICATES RECORD DIMENSION PER C.O.S. 2809 MS
- (R2) INDICATES RECORD DIMENSION PER C.O.S. 3438 RB
- (R3) INDICATES RECORD DIMENSION PER RAILROAD PLANS
- P.O.B. INDICATES POINT OF BEGINNING
- N.F.S.L. INDICATES NATIONAL FOREST SYSTEM LANDS
- ↑ INDICATES OWNERSHIP TIE
- - - - - INDICATES SECTION SUBDIVISION LINE



**POINT LIST**

- P-1 FOUND 1-1/2" AC STAMPED "MCARTHUR RLS 1741 S" N 04°08'27" E, 4.86' FROM SET MONUMENT
- P-2 FOUND MONUMENT 0.19' WEST OF SECTION LINE
- P-3 FOUND MONUMENT 0.43' SOUTH OF SECTION LINE

**CURVE TABLE**

CURVE	DELTA ANGLE	RADIUS	ARC LENGTH	CHORD BEARING	CHORD LENGTH
C1	01°48'40"	5929.65'	187.44'	S 48°12'46" E	187.44'

LINE	BEARING	DISTANCE
L1	N 85°35'04" W	330.61'
L2	N 04°29'47" E	435.60'
L3	N 85°24'12" W	200.00'
L4	N 45°18'28" W	306.01'
L5	N 85°34'54" W	200.00'
L6	S 04°29'50" W	200.00'
L7	N 85°34'54" W	200.00'
L8	N 04°29'50" E	200.00'
L9	S 85°34'54" E	170.22'
L10	S 85°34'54" E	370.22'

CERTIFICATE OF SURVEY No. \_\_\_\_\_

**TIMBERLINE**  
LAND SURVEYORS  
P.O. BOX 1565  
TROUT CREEK, MONTANA 59874  
JOB No. 18-038 DATE: 08-24-20